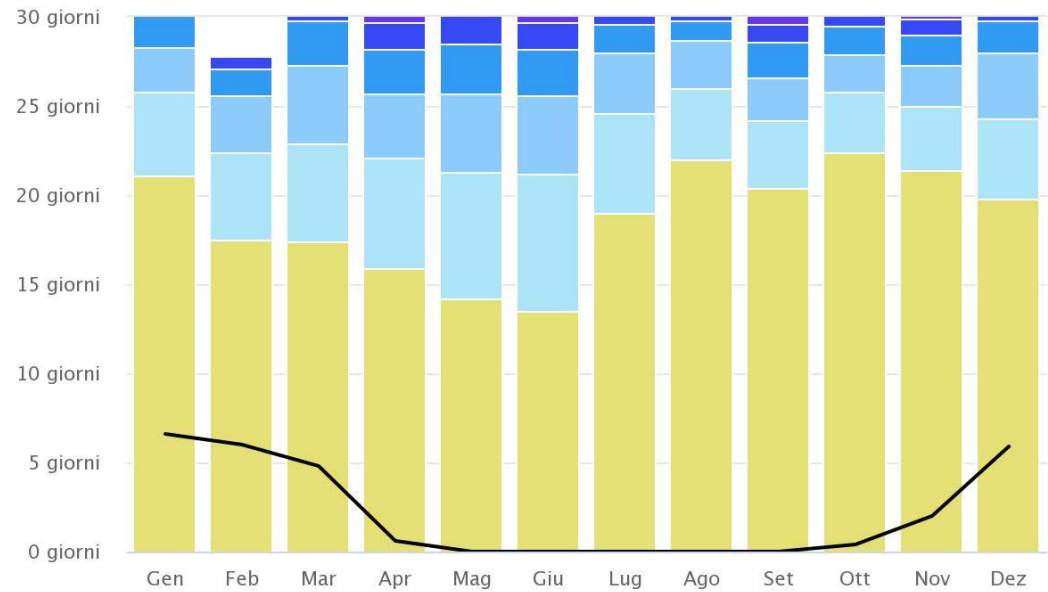
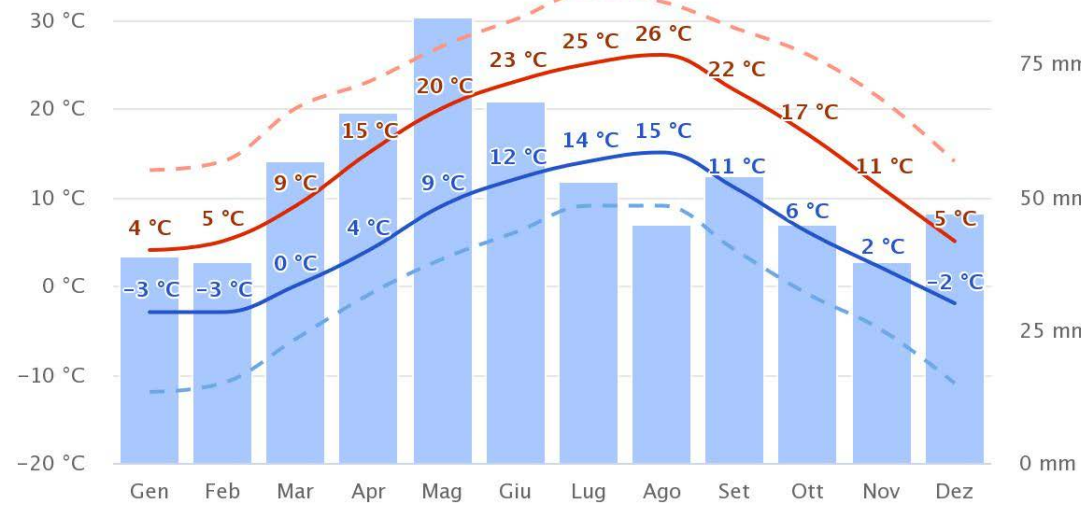


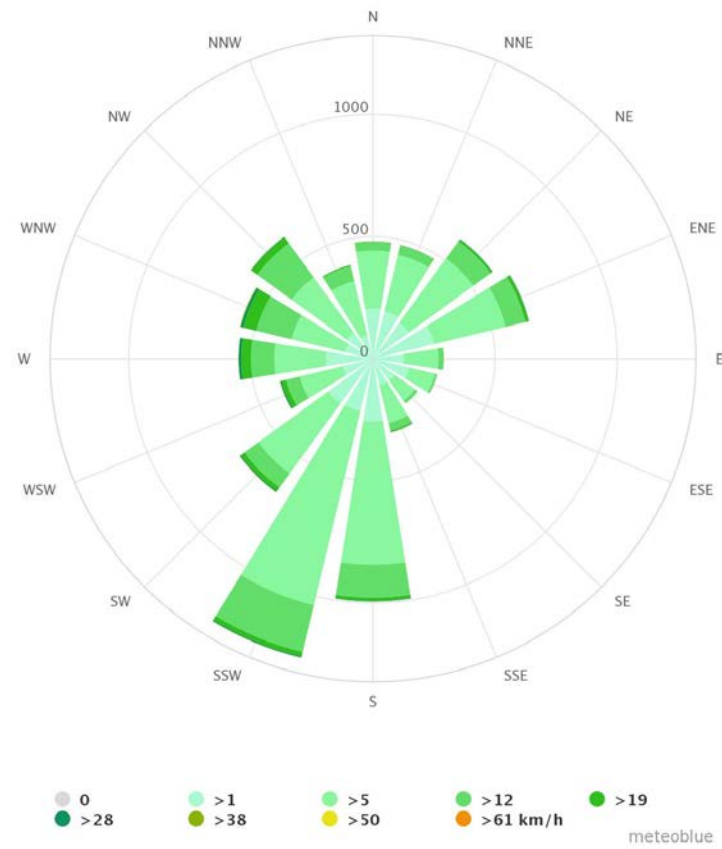
Chestnut forest

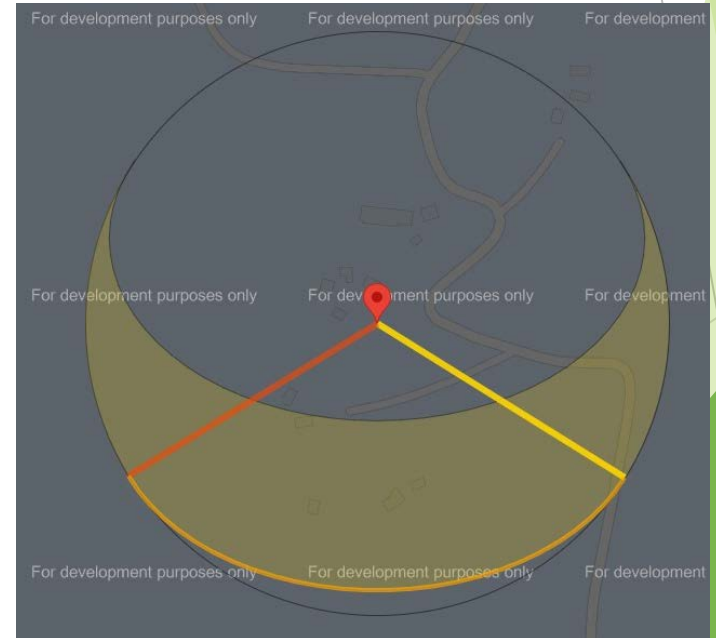
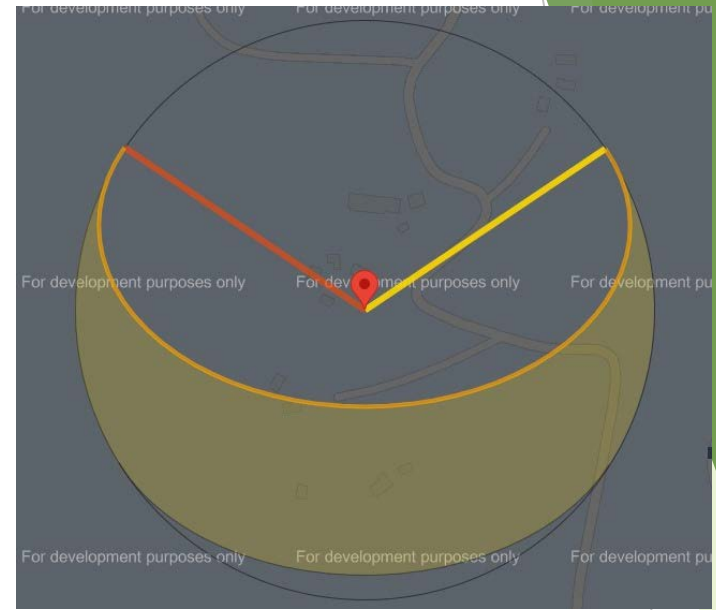
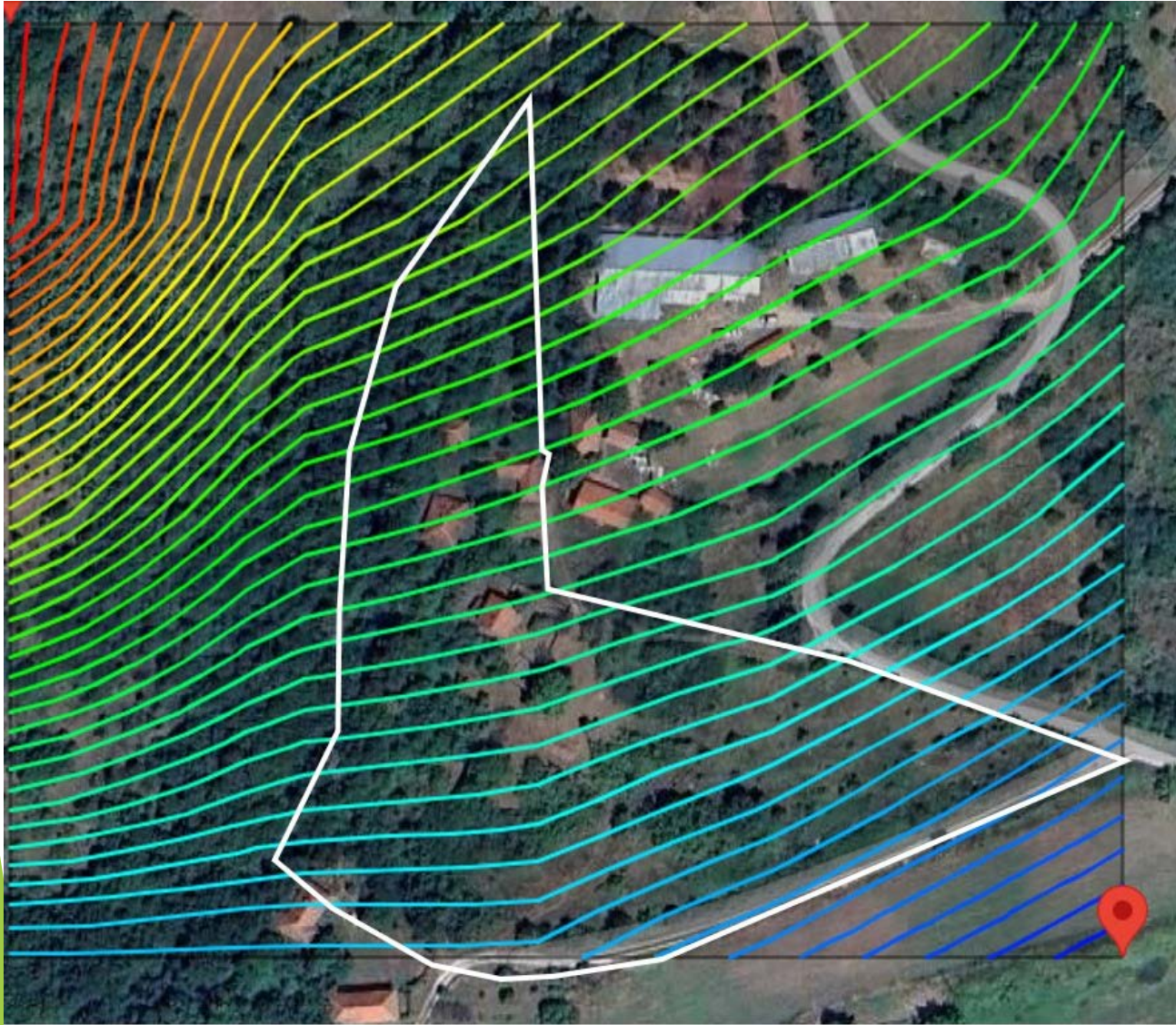


● 50-100mm ● 20-50mm ● 10-20mm ● 5-10mm
● 2-5mm ● < 2mm ● Giorni asciutti — Giorni di neve



■ Precipitazione - - - Giornate calde - - - Nottate fredde
— Media delle massime giornaliere — Media delle minime giornaliere
- - - Velocità del vento







HAPPY LYUBU

A PERMACULTURE DESIGN TIMELINE

2024

EARTHWORK

Swales, water pools, boomerangs
6 weeks (Jan-March)

Cost: 500€



SYNTROPIC FOREST

Planting trees (65 big + 190 small)
2 weeks (January and October)

Cost: 600€



RENOVATE FAMILY HOUSE

- Professional work for fixing structure (6 weeks, June-July)
- 1 self financed workshop (15 people) for wall restorations, woodwork, compost toilet, reed bed (2 weeks, July)

Cost: 7000€



2025

MILESTONE

Lyubo moves in with his family



FOOD PRODUCTION

- Kitchen garden (Spring)
- Green house (October)
- Chickens and Gees (March)

Cost: 300€ (a lot of up-cycling)



RENNOVATE BARN

Building of kitchen and community space
- Professional work for fixing the structure



HAPPY LYUBO

A PERMACULTURE DESIGN TIMELINE

