

Sara's farm

-Donje Pokuplje, Croatia-

GREEN PATHS - PDC

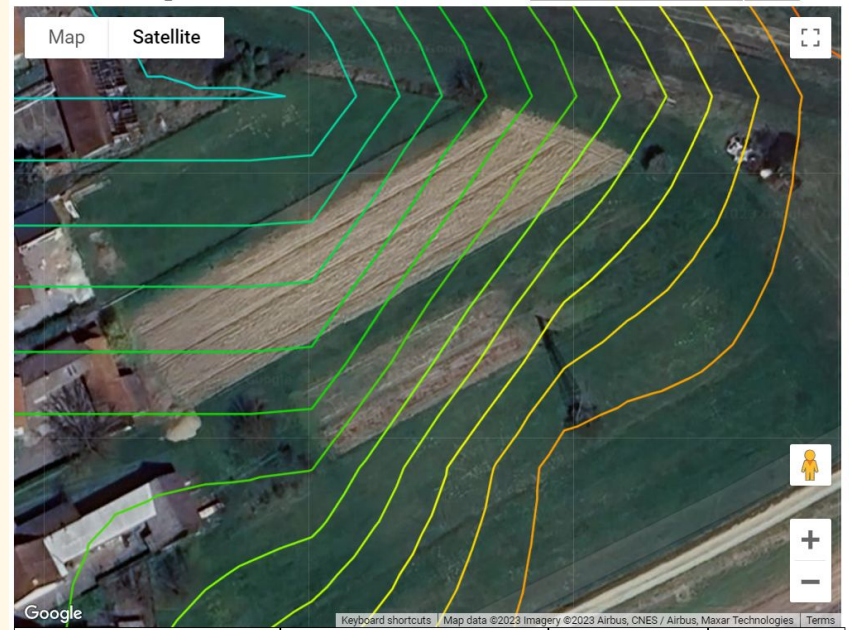
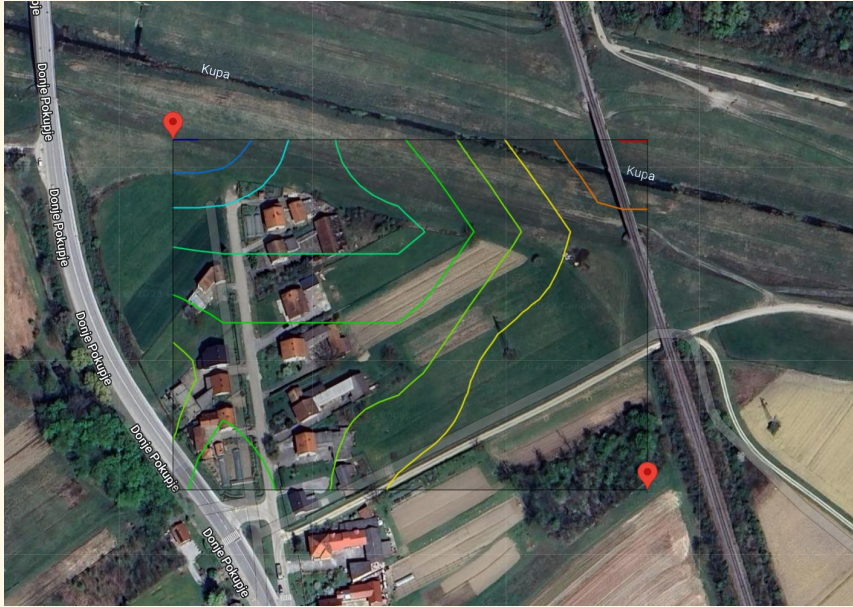




Goals

- Market gardening field
- Production, profit
- Food self-sufficiency
- Trees, vegetables, herbs and mushrooms. Syntropic forest.
- Future self sufficiency
- Budget: 10 k €

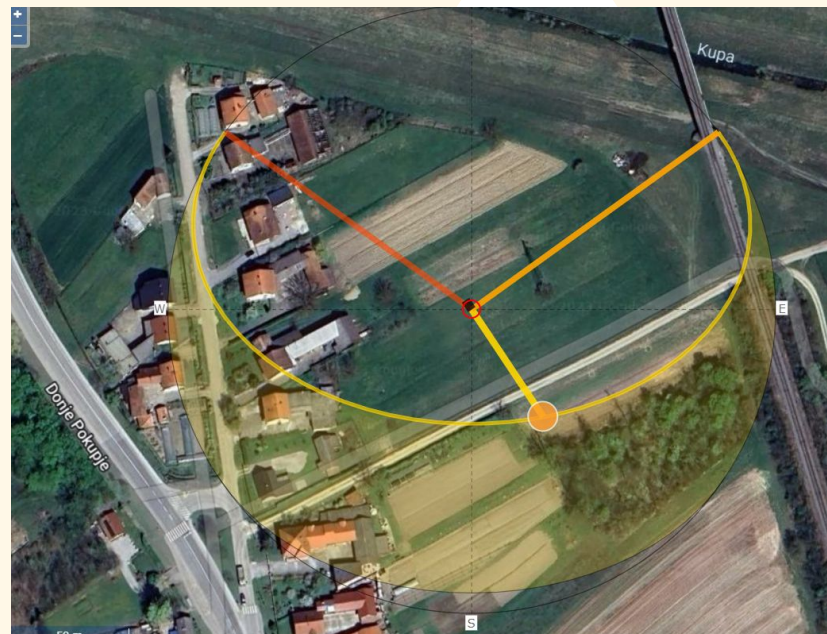
Topography: Contour Lines



Sun trajectories



Winter solstice



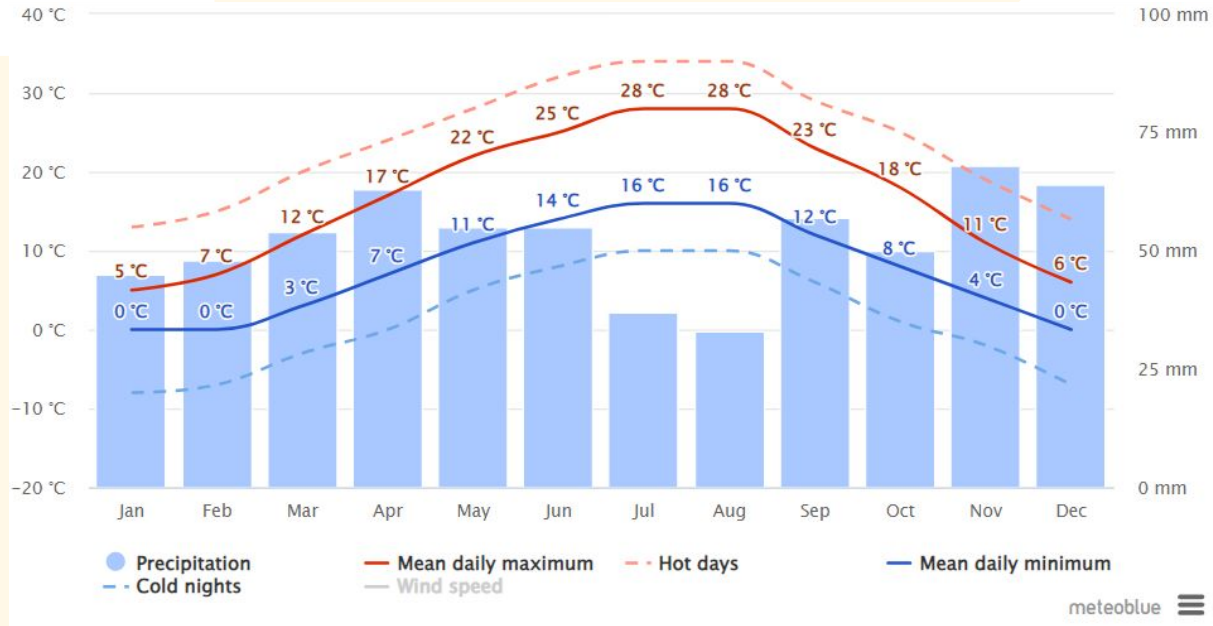
Summer solstice



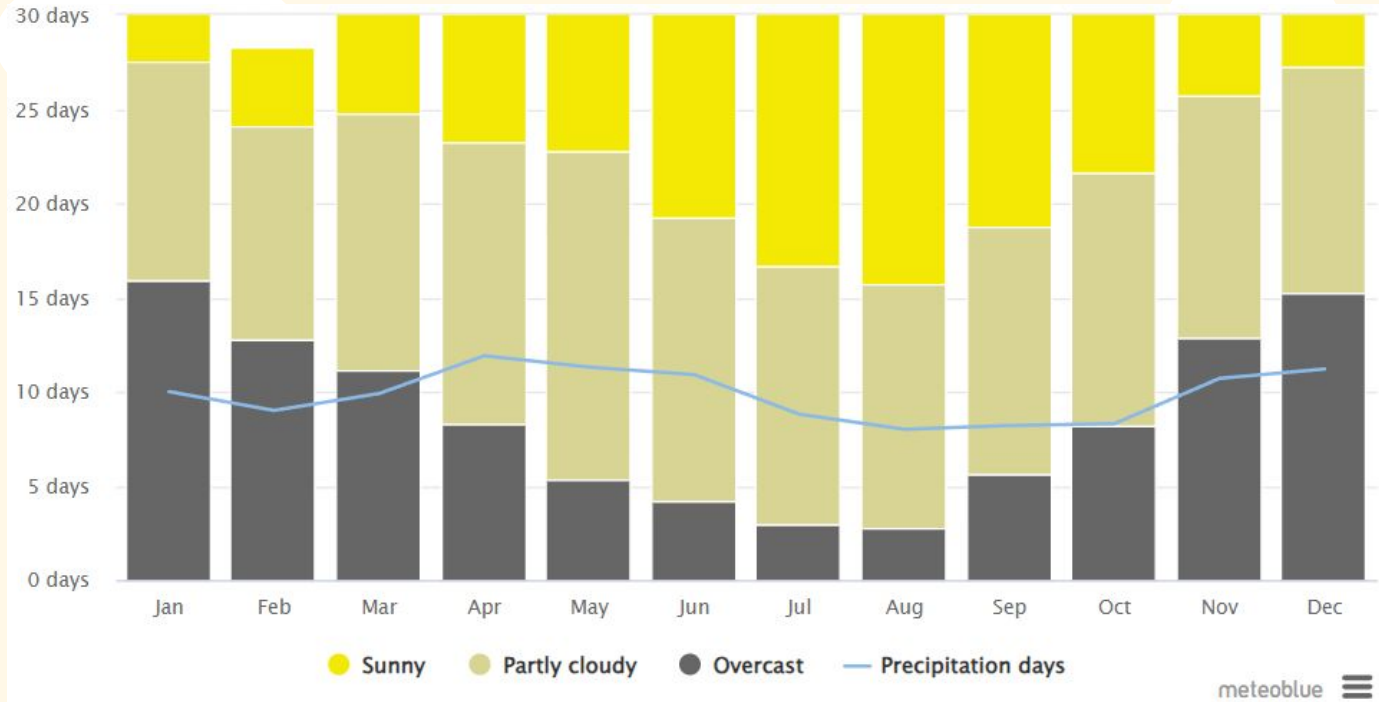




Average temperatures and precipitation



Cloudy, sunny, and precipitation days



Desired species

- Apple
- Pear
- Plum
- Cherry
- Sour cherry
- Willow
- Ginkgo
- Berries
- Pomegranate
- Elderberry
- Vegetables (cabbage, swiss chard, salads, cucumbers, tomatoes, celery, parsley, radish, okra...)
- Herbs (mint, sage...)



Strategy



Mushrooms
- medicinal mushrooms
and experimenting with
growing methods



Alley cropping



Self sufficient and
profitable in the
future